

## Laminin isoforms differentially regulate adhesion, spreading, proliferation, and ERK activation of $\beta 1$ integrin-null cells

Yamato Kikkawa<sup>a</sup>, Hao Yu<sup>a</sup>, Elke Genersch<sup>a</sup>, Noriko Sanzen<sup>b</sup>, Kiyotoshi Sekiguchi<sup>b</sup>, Reinhard Fässler<sup>c</sup>, Kevin P. Campbell<sup>d</sup>, Jan F. Talts<sup>a,e</sup>, Peter Ekblom<sup>a,\*</sup>

<sup>a</sup>Section for Cell and Developmental Biology, Department of Cell and Molecular Biology, Lund University, SE-22184 Lund, Sweden

<sup>b</sup>Institute for Protein Research, Osaka University, Suita, Osaka 565-0871, Japan

<sup>c</sup>Max-Planck-Institute for Biochemistry, Martinsried, Germany

<sup>d</sup>Howard Hughes Medical Institute, Department of Physiology and Biophysics, Department of Neurology, University of Iowa College of Medicine, Iowa City, IA 52242, USA

<sup>e</sup>Department of Animal and Veterinary Science, The Royal Veterinary and Agricultural University, Frederiksberg C, DK 1870, Denmark

Received 27 May 2003, revised version received 3 June 2004

Available online 7 August 2004

### Abstract

The presence of many laminin receptors of the  $\beta 1$  integrin family on most cells makes it difficult to define the biological functions of other major laminin receptors such as integrin  $\alpha 6\beta 4$  and dystroglycan. We therefore tested the binding of a  $\beta 1$  integrin-null cell line GD25 to four different laminin variants. The cells were shown to produce dystroglycan, which based on affinity chromatography bound to laminin-1, -2/4, and -10/11, but not to laminin-5. The cells also expressed the integrin  $\alpha 6\beta 4A$  variant. GD25  $\beta 1$  integrin-null cells are known to bind poorly to laminin-1, but we demonstrate here that these cells bind avidly to laminin-2/4, -5, and -10/11. The initial binding at 20 min to each of these laminins could be inhibited by an integrin  $\alpha 6$  antibody, but not by a dystroglycan antibody. Hence, integrin  $\alpha 6\beta 4A$  of GD25 cells was identified as a major receptor for initial GD25 cell adhesion to three out of four tested laminin isoforms. Remarkably, cell adhesion to laminin-5 failed to promote cell spreading, proliferation, and extracellular signal-regulated kinase (ERK) activation, whereas all these responses occurred in response to adhesion to laminin-2/4 or -10/11. The data establish GD25 cells as useful tools to define the role integrin  $\alpha 6\beta 4A$  and suggest that laminin isoforms have distinctly different capacities to promote cell adhesion and signaling via integrin  $\alpha 6\beta 4A$ . © 2004 Elsevier Inc. All rights reserved.

**Keywords:** Laminin; Integrin; Dystroglycan; Extracellular signal-regulated kinase

### Introduction

The biological effects of basement membranes are to a large extent due to laminins, large heterotrimers composed of  $\alpha$ ,  $\beta$ , and  $\gamma$  chains [1]. Combinations of chains can generate at least 14 different laminin isoforms, which are expressed in a tissue-specific manner [2–4].

To date, at least nine integrins have been shown to recognize various laminin isoforms. Six of these ( $\alpha 1\beta 1$ ,

$\alpha 2\beta 1$ ,  $\alpha 3\beta 1$ ,  $\alpha 6\beta 1$ ,  $\alpha 7\beta 1$ ,  $\alpha 9\beta 1$ ) belong to the  $\beta 1$  integrin subfamily. The  $\alpha 6$  integrin is unique among the  $\alpha$ -chains in that it also associates with  $\beta 4$ , and integrin  $\alpha 6\beta 4$  is a major receptor for several laminins. Finally, integrins  $\alpha v\beta 3$  and  $\alpha v\beta 5$  recognize the  $\alpha 5$  chain of laminin-10/11 [5–8]. A major non-integrin laminin receptor with particularly high affinity for laminin-1 and -2/4 is dystroglycan [9]. Laminin–integrin interactions stimulate several signal transduction cascades [10], but due to the multitude of ligands, receptors, and even splice variants of the receptors that may signal differentially [11], there are still several open issues. Gene targeting approaches in mice provide compelling evidence that laminins and their receptors have discrete functions already during embryogenesis [1,9,12,13], but the interpre-

\* Corresponding author. Section for Cell and Developmental Biology, Department of Cell and Molecular Biology, Lund University, BMC B12, Sölvegatan 19, SE-22184 Lund, Sweden. Fax: +46 46 222 0855.

E-mail address: [Peter.Ekblom@medkem.lu.se](mailto:Peter.Ekblom@medkem.lu.se) (P. Ekblom).

tation of the mechanistic details of the generated phenotypes is complicated.

Cells can be confronted with individual laminin isoforms *in vitro*, but a large amount of laminin-binding  $\beta 1$  integrins are usually produced by cultured cells, and therefore the role of individual receptors may be difficult to dissect. Genetic approaches can be used to generate cells expressing a more limited or defined set of receptors [14–17]. GD25 cells lacking all  $\beta 1$  integrins have been successfully used to define the role of integrin  $\alpha v\beta 3$  for assembly of fibronectin or vitronectin [16,17]. Similar approaches should be particularly useful to clarify the roles of major non- $\beta 1$  integrin laminin receptors such as integrin  $\alpha 6\beta 4$  and dystroglycan. However, previous studies have shown that  $\beta 1$  integrin-deficient GD25 cells bind poorly to laminin-1 [16], even though they express some form of integrin  $\alpha 6\beta 4$  [18]. We reasoned that GD25 cells might be used to dissect the role of non- $\beta 1$  laminin receptors in cellular interactions with other laminin isoforms.

We found that laminin-1 was the only isoform of the four tested laminins that bound poorly to GD25 cells. Thus, GD25 cells bound well to laminins-2/4, -5, and -10/11. The initial GD25 cell binding to each of these laminins could be blocked by antibodies against integrin  $\alpha 6$ . This subunit can associate either with the  $\beta 1$  or the  $\beta 4$  subunit. Several splice variants of these subunits are known [11]. Because GD25 cells lack  $\beta 1$  integrin and we here demonstrate expression of only the  $\alpha 6A$  and  $\beta 4A$  variants in these cells, it follows that initial GD25 cell binding to laminins-2/4, -5, and -10/11 is mediated by the  $\alpha 6A\beta 4A$  integrin variant. Remarkably, only two of the three adhesive laminin isoforms initiated cell spreading, proliferation, and activation of extracellular signal-regulated kinase (ERK). Our results suggest fundamental differences between laminin isoforms as ligands mediating integrin  $\alpha 6\beta 4$  functions. We also provide evidence that GD25 cells express a 120-kDa form of dystroglycan and that GD25-derived dystroglycan can recognize laminin-1, -2/4, and -10/11.

## Materials and methods

### Proteins and antibodies

Mouse laminin-1 (EHS laminin) was purchased from Sigma (St. Louis, MO), and the human laminin-2/4 (merosin), plasma fibronectin, and the partially degraded human laminin-10/11 mixture [19] from GIBCO Life Technologies (Gaithersburg, MD). Laminin-5 was purified from the conditioned medium of the human gastric carcinoma line MKN45 by immunoaffinity chromatography using affinity-purified antibody against human laminin  $\gamma 2$  chain [20]. Based on molecular mass estimations, the laminin-5 preparation contains the expected chains, a 160- to 165-kDa  $\alpha 3A$  variant lacking the two last laminin globular (LG) domains, a 140-kDa  $\beta 3$  chain, and a 105-

kDa  $\gamma 2$  chain proteolytically cleaved in its N-terminus (Fig. 1). Intact laminin-10/11 was purified to homogeneity from conditioned medium of human lung adenocarcinoma A549 cells by immunoaffinity chromatography using monoclonal antibody against human laminin  $\alpha 5$  chain as described [21].

The anti-mouse integrin  $\alpha 6$  monoclonal antibody (GoH3) was a gift from Dr. A. Sonnenberg (Netherlands Cancer Institute, Amsterdam). The anti- $\alpha$ -dystroglycan monoclonal antibody I1H6, anti-dystrophin (X19C2), and anti- $\beta$ -dystroglycan polyclonal antibody AP83 were those described [22]. The anti- $\alpha v\beta 3$  antibody LM 609 was from Chemicon International Inc. (Temecula, CA). The antihuman laminin  $\beta 1$  chain monoclonal antibody (114DG10B11) was a gift from Dr. I. Virtanen (University of Helsinki). The anti-mouse integrin  $\beta 4$  (346-11A) and anti-laminin  $\beta 2$  chain (C4) monoclonal antibodies were purchased from Pharmingen (San Diego, CA) or Developmental Studies Hybridoma Bank (University of Iowa). The antihuman laminin  $\alpha 5$  chain monoclonal antibody 4C7 [23] was purchased from GIBCO Life Technologies. Monoclonal antibody 15H5 against human laminin  $\alpha 5$  was described previously [21]. The monoclonal antibody (2B10) recognizing human laminin  $\alpha 3$  subunit was produced by fusion of SP2/0 mouse myeloma cells with splenocytes from mice immunized with human laminin-5 purified by immunoaffinity chromatography using affinity-purified rabbit polyclonal antibody against human laminin  $\gamma 2$  chain [20]. Hybridomas were screened for reactivity with purified human laminin-5. The specificity of the antibodies was verified by immunoblotting and immunoprecipitation. Because the clone 2B10 was highly reactive with purified human laminin-5 ( $\alpha 3\beta 3\gamma 2$ ) but not with a heterodimer of  $\beta 3\gamma 2$  secreted by HT1080 fibrosarcoma cells, it recognized human laminin  $\alpha 3$  chain (Sanzen,

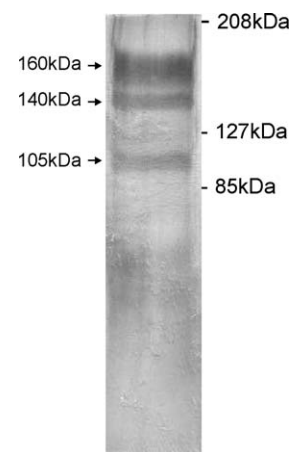


Fig. 1. Determination of the molecular masses of the three chains of laminin-5, purified from the medium of MKN45 human gastric carcinomas cells by immunoaffinity chromatography using rabbit polyclonal antibody against  $\gamma 2$  chain. The purified protein trimer was subjected to SDS-PAGE under reducing conditions and stained with silver. Molecular markers are denoted in kDa to the right, and the estimated molecular masses of the laminin-5 chains to the left.

N. and Sekiguchi, K., unpublished data). Anti phosphotyrosine antibody RC-20 was from BD Biosciences (Eremodegem, Belgium).

#### *Cell line and culture conditions*

Mouse GD25  $\beta$ 1-null cells or GD25 cells transfected to express  $\beta$ 1A-integrin [16,24] were grown in DMEM supplemented with 25 mM HEPES (pH 7.2), penicillin, streptomycin sulfate, fungizone, and 10% FBS (GIBCO Life Technologies) at 37°C in a humidified atmosphere containing 5% CO<sub>2</sub>.

#### *Cell adhesion assays*

Cell adhesion assays were performed as described previously [15]. To exclude effects of differential stickiness of proteins to the surface, 96-well immunoplates with high capacity to absorb proteins were used (Nunc, Roskilde, Denmark). Plates were incubated with laminin-1, -2/4, -5, -10/11, or fibronectin at 37°C for 1 h, and then blocked with PBS containing 1% bovine serum albumin for another hour at the same temperature. The cells were suspended in serum-free DMEM at a density of  $4 \times 10^5$  cells/ml, and 50- $\mu$ l aliquots of cell suspension were added to wells coated with varying concentrations of laminin isoforms or fibronectin, followed by incubation at 37°C for 1 h. Adhered cells and spread cells were stained with Giemsa and counted under a microscope. One square millimeter was counted in each well, three wells per assay, and at least three assays per experiment. Cells were considered to have adapted a spread morphology when they had become flattened with the long axis more than twice the diameter of the nucleus. Photographs of adhering cells were taken by a 1.2 million pixel digital camera system (Pixera corporation, Los Gatos, CA). For other cell adhesion assays, monoclonal antibodies against integrin  $\alpha$ 6 (GoH3),  $\beta$ 4 (346-11A),  $\alpha$ -dystroglycan (IIH6), and dystrophin (XIXC2) were individually preincubated with cells in serum-free DMEM at a density of  $4 \times 10^5$  cells/ml at room temperature for 15 min. The preincubated cells were transferred onto plates precoated with laminin isoforms or fibronectin and further incubated at 37°C for 20 or 60 min. Attached cells were counted as described above.

#### *Cell lysates, immunoprecipitation, and immunoblotting*

For immunoprecipitation, GD25 cells were removed from culture flasks with PBS containing 10 mM EDTA and labeled by ECL protein biotinylation module (Amersham Biosciences, Buckinghamshire, UK). Labeled cells were washed twice with PBS and lysed with lysis buffer (20 mM Tris-HCl, pH 7.5, 4 mM EDTA, 100 mM NaCl, 1% NP-40) containing a protease inhibitor cocktail (Sigma). Lysates were clarified at 13,000 rpm and pre-cleaned with Protein G-Sepharose (Amersham Biosciences).

Protein G Sepharose and anti-mouse integrin  $\alpha$ 6 (GoH3) or  $\beta$ 4 (346-11A) monoclonal antibodies were then added to the lysates. After incubation for 2 h at 4°C, the immune complexes were washed three times with lysis buffer and dissolved in SDS sample buffer. Precipitated proteins were separated on SDS-PAGE and transferred to PVDF membrane. Separated proteins were visualized with streptavidin horseradish peroxidase and ECL Western blotting detection reagents (Amersham Biosciences). For immunoblotting of integrin  $\beta$ 4, cell lysates and precipitated proteins were separated on SDS-PAGE under reducing condition and transferred to PVDF membrane. Proteins on the membrane were reacted with monoclonal antibody against  $\beta$ 4 followed by incubation with rabbit anti-rat IgG antibody conjugated with horseradish peroxidase (Sigma). Bound antibodies were visualized as described above.

For immunoblotting of phosphorylated extracellular signal-regulated kinases 1 and 2 (ERK1/2), GD25 cells grown to 80–90% confluency were washed twice with PBS and then incubated in medium without serum for 24 h. Cells were dissociated with trypsin/EDTA. Trypsin treatment was stopped by adding soybean trypsin inhibitor (1 mg/ml). Cells were washed with serum-free DMEM, adjusted to  $1 \times 10^6$  cells/ml, and seeded on substratum coated with laminin isoforms or fibronectin. Following incubation for 1 h, cells were directly lysed with 2 $\times$  SDS sample buffer containing 2-mercaptoethanol. Whole lysates were subjected to SDS-PAGE and transferred to PVDF membranes. Proteins on the membrane were reacted with a phosphospecific ERK1/2 antibody (New England BioLab, Inc.) followed by incubation with secondary IgG antibody conjugated with horseradish peroxidase. Bound antibodies were visualized as described above. PVDF membranes were incubated in stripping buffer (62.5 mM Tris-HCl, pH 6.8, 2% SDS, 0.1 M 2-mercaptoethanol) for 1 h at 60°C and reprobed with anti-ERK1/2 polyclonal antibody (New England BioLabs Inc.). To examine the effects of Wortmannin (Sigma) or PD98059 (New England BioLabs Inc.) on ERK activation, cells were treated with the pharmacological reagents for 10 min in suspension before plating on substrates. Signal intensities were quantified with the Fujifilm LAS 1000 image analyzer system and the Science Lab 2001 Image Gauge software version 4.0 (Fuji Photo Film Co, Japan).

To detect phosphorylated integrins, GD25 cells grown to 80–90% confluency were treated as described above and seeded on substratum coated with laminin-5 or laminin-10/11. Following incubation for 1 h, cells were washed twice with PBS and lysed with lysis buffer containing a protease inhibitor cocktail. Immunoprecipitation using anti-integrin  $\beta$ 4 antibody (346-11A) followed by immunoblotting with the anti-phospho-tyrosine antibody RC-20, stripping, and reprobing with the anti-integrin  $\beta$ 4 antibody was performed according to the above-described procedure.

## RT-PCR

Total RNA was extracted by RNeasy Mini Kit (QIAGEN, Hilden, Germany) and cDNA was synthesized using a First Strand Synthesis Kit (Amersham). The integrin  $\alpha 6$  subunit was amplified using a previously described set of primers [25]. For integrin  $\alpha 6A$  and B subunits primer pair 1156/1157: 1156 (5'-ATCTCTCGCTCTTCTTTCCG-3') and 1157 (5'-GACTCTTAAGTGTAGCGTGA-3'). The integrin  $\beta 4$  subunit was amplified using three sets of primers of which two sets of primers were previously described [26]. Primer pair 679/680: 679 (5'-CGAGAGAGAGGCTATCA-TCAA-3') and 680 (5'-GGACGTGCTCAGCACTCGGT-3') for integrin  $\beta 4C$  and primer pair 681/682: 681 (5'-CCACTCTCTGACACGCACAG-3') and 682 (5'-TAGG-GATGTTGAGCCGATGCA-3') for insert of integrin  $\beta 4B$ . A set of previously described primers for integrin  $\beta 4D$  was used [27]. MITGB409/MITGB412, nucleotides 5070–5158 of mouse integrin  $\beta 4A$ : MITGB409 (5'-GGAGATATCCTTGGCTACCTG-3') and MITGB412 (5'-TCAGGGTTGTCTCCGTCCAC-3'). PCR products were amplified in DNA engine RTC-200 (MJ Research, Incline Village, NV) in the presence of AmpliTaq Gold (Perkin-Elmer Life Sciences, Boston, MA). The conditions were: 95°C for 9 min, 40 cycles at 95°C for 1 min, 53°C (1156/1157), 55°C (679/680), or 57°C (681/682 and MITGB409/MITGB412) for 1 min, 72°C for 1 min, 72°C for 10 min. PCR products were analyzed by electrophoresis using 1.5% or 2.0% agarose gels.

## Cell proliferation assay

A colorimetric Bromodeoxyuridine (BrdU) ELISA assay (Boehringer Mannheim, Mannheim, Germany) was used to measure cell proliferation. Cells were cultured in serum-free medium for 24 h. After cell dissociation, cells were adjusted to  $1 \times 10^6$  cells/ml in serum-free DMEM containing BrdU. Cell suspension (100  $\mu$ l) was seeded on substratum coated with Poly-L-lysine, laminin isoforms, or fibronectin. Following incubation for 3 h, incorporation of BrdU was detected according to the manufacturer's protocol.

## Affinity chromatography on laminin columns and overlay assay

Laminin-2/4 or anti-mouse integrin  $\beta 4$  monoclonal antibody (346-11A) was coupled to CNBr-Sepharose 4B (Amersham). Columns were equilibrated with running buffer (10 mM Tris-HCl, 150 mM NaCl, 1 mM CaCl<sub>2</sub>, 1 mM MgCl<sub>2</sub>, 50 mM octyl- $\beta$ -D-glucopyranoside (Sigma)). Biotin-labeled GD25 cells were lysed in running buffer containing 200 mM octyl- $\beta$ -D-glucopyranoside and protein inhibitor cocktail and centrifuged at 13,000 rpm for 30 min. Cell lysates were passed over the anti-mouse integrin  $\beta 4$ -Sepharose column to remove integrin  $\alpha 6\beta 4$  and then applied to the laminin-2/4-Sepharose column. The lami-

nin-2/4-Sepharose column was washed with running buffer and eluted with running buffer containing 10 mM EDTA. For detection of biotin-labeled proteins and immunoblotting, fractions were separated on SDS-PAGE and transferred to PVDF membranes. Proteins on the membrane were reacted with streptavidin horseradish peroxidase or antibody against dystroglycan followed by incubation with secondary antibody conjugated with horseradish peroxidase. For overlay assays, biotin-labeled laminin-1 was incubated with membranes at 1  $\mu$ g/ml overnight at 4°C.

Laminin-5 (100  $\mu$ g) was bound to Sepharose-coupled anti-laminin  $\gamma 2$  polyclonal antibody. Laminin-10/11 (100  $\mu$ g) was bound to Sepharose-coupled monoclonal antibody 114DG10B11 against laminin  $\beta 1$  chain and C4 monoclonal antibody against laminin  $\gamma 2$  chain. One milligram of the antibodies and 1 ml of CNBr-Sepharose 4B were used for the coupling reactions (Amersham). Affinity chromatography was performed as described above. Protein concentrations were determined by the dye method using a Bio-Rad protein assay kit (Bio-Rad Laboratories, Hercules, CA).

## Results

### Adhesion and spreading of $\beta 1$ integrin-null GD25 cells on laminin isoforms

As reported previously [16], the GD25  $\beta 1$  integrin-deficient cells attached and spread well on surfaces coated with 10  $\mu$ g/ml of fibronectin, but not on surfaces coated with 10  $\mu$ g/ml of laminin-1 (Fig. 2A). However, they readily attached on surfaces coated with 10  $\mu$ g/ml of laminin-2/4, -5, or -10/11 (Fig. 2). The cells also spread on laminin-2/4 or -10/11 with no obvious differences in morphology (Fig. 2A). In sharp contrast, GD25 cells bound to laminin-5 acquired a rounded morphology and did not spread at all (Fig. 2A). GD25 cells transfected with  $\beta 1$  integrin attached and spread on both laminin-1 and laminin-5 (Fig. 2B), showing that the used laminin preparations were fully biologically active reagents for a control cell line.

In the initial morphological assays (Fig. 2), we used intact laminin-10/11 derived from culture supernatant [21]. Another laminin preparation, derived from human placenta by mild pepsin digestion and purification using antibody 4C7 [28] detecting laminin  $\alpha 5$  [23], is a mixture of intact and partially degraded laminin-10 and -11 [19]. Because this preparation is widely used, we compared its adhesive activity with that of intact laminin-10/11 [21]. Immunoblotting of laminin  $\alpha 5$  chain under nonreducing conditions showed that the molecular mass of intact laminin-10/11 was approximately 800 kDa, while the molecular mass of placenta-derived, pepsin-digested laminin-10/11 was approximately 650–750 kDa (Fig. 3A). Despite this difference, GD25 cells attached equally well to both preparations (Fig. 3B). The commercial pepsin-digested laminin-10/11 was slightly more active in

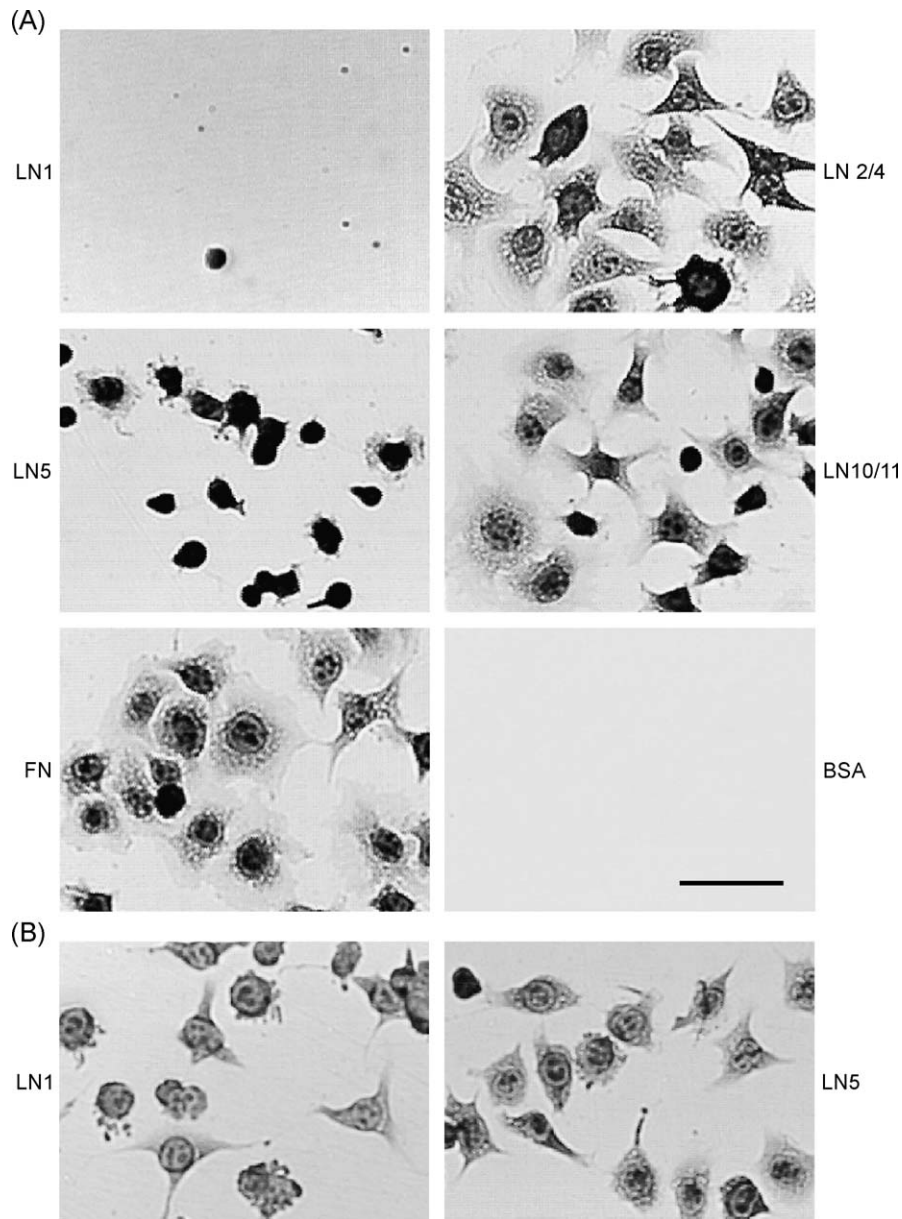
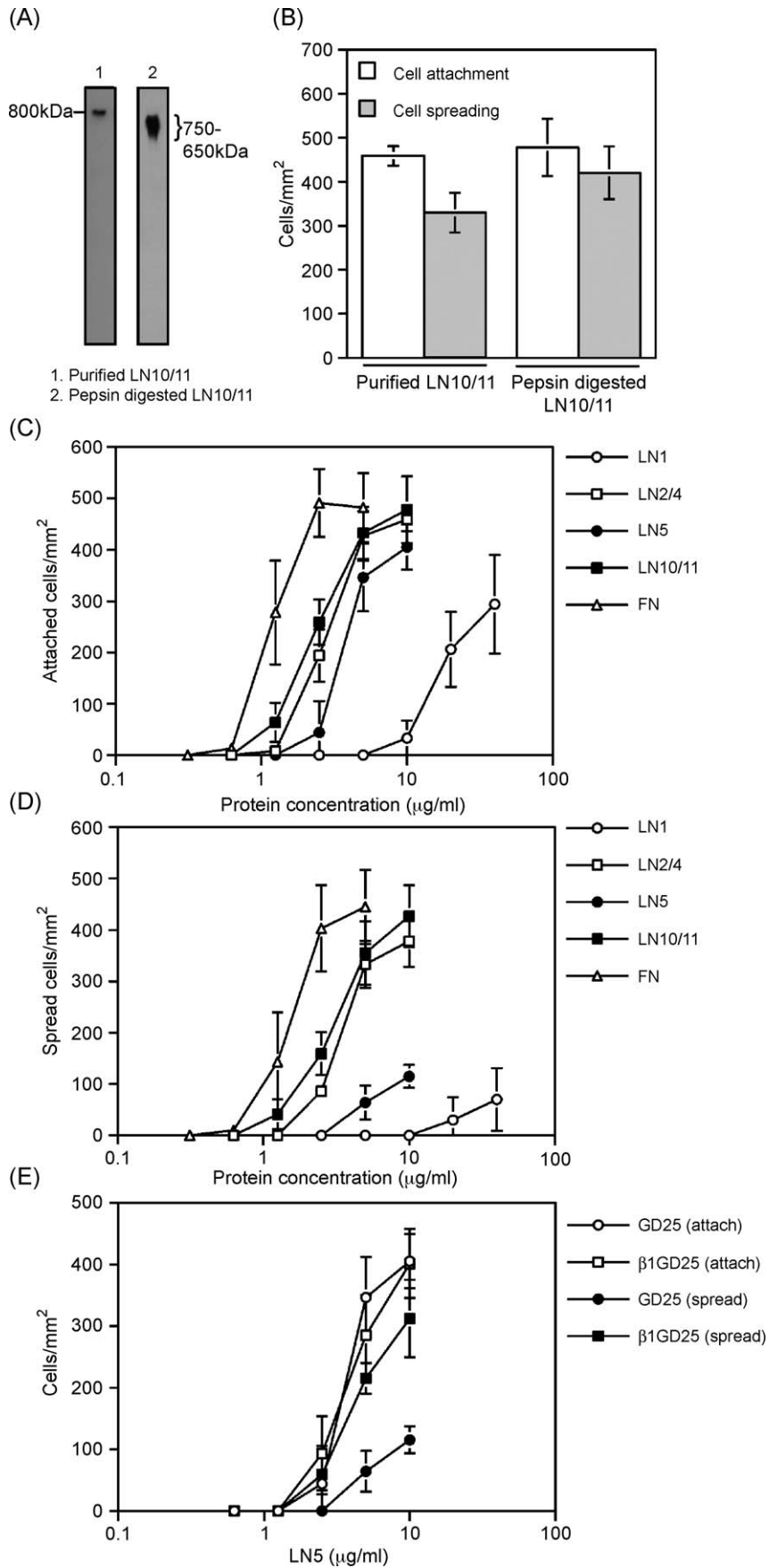


Fig. 2. Morphology of GD25 cells lacking the integrin  $\beta 1$  subunit on substrates coated with laminin isoforms or fibronectin. (A) Microtiter plates were precoated with 10  $\mu\text{g}/\text{ml}$  of laminin-1 (LN1), laminin-2/4 (LN2/4), laminin-5 (LN5), laminin-10/11 purified from conditioned medium of human lung carcinoma (LN10/11), or 5  $\mu\text{g}/\text{ml}$  of fibronectin (FN) and blocked with PBS containing 1%BSA. GD25 cells were incubated for 60 min at 37°C. Cells were rinsed with serum-free DMEM, fixed in methanol, stained with Giemsa, and photographed. (B) Microtiter plates were precoated with 10  $\mu\text{g}/\text{ml}$  of laminin-1 or -5, and GD25 cells transfected with  $\beta 1\text{A}$  integrin were incubated and analyzed as in A. Scale bar: 50  $\mu\text{m}$ .

Fig. 3. Quantification of attachment and spreading of GD25 cells on laminin isoforms or fibronectin. (A) Intact laminin-10/11 purified from conditioned medium of human lung carcinoma or pepsin-digested laminin-10/11 purchased from GIBCO was separated on a 7.5% SDS polyacrylamide gel under nonreducing condition and immunoblotted with monoclonal antibody 15H5 against antihuman laminin  $\alpha 5$  chain. The molecular mass was estimated by using the migration of EHS laminin-1 under nonreducing conditions (800 kDa) and reducing conditions (400 and 200 kDa) as markers. (B) Attachment (empty column) and spreading (full column) of GD25 cells to intact laminin-10/11 and pepsin-digested laminin-10/11. GD25 cells were incubated in 96-well microtiter plates precoated with 10  $\mu\text{g}/\text{ml}$  of intact laminin-10/11 and pepsin-digested laminin-10/11 for 60 min at 37°C. Cells adhering to the plates were stained and counted under microscope. The spreading of GD25 cells was quantified as described in Materials and methods. Each column represents the mean of triplicate assays. Cell-attachment (C) and spreading (D) of GD25 cells to laminin isoforms and fibronectin. GD25 cells were incubated in 96-well microtiter plates precoated with increasing concentrations of laminin-1 (open circle), laminin-2/4 (open square), laminin-5 (closed circle), laminin-10/11 (closed square), or fibronectin (open triangle) for 60 min at 37°C. (E). Influence of the  $\beta 1$  integrin subunit on adhesion and spreading of GD25 cells on laminin-5. Attachment (open symbols) and spreading (closed symbols) of integrin  $\beta 1$ -deficient GD25 cells (circle symbols) and GD25 cells expressing integrin  $\beta 1\text{A}$  (square symbols). Each point represents the mean of triplicate assays. Bars indicate standard deviation.



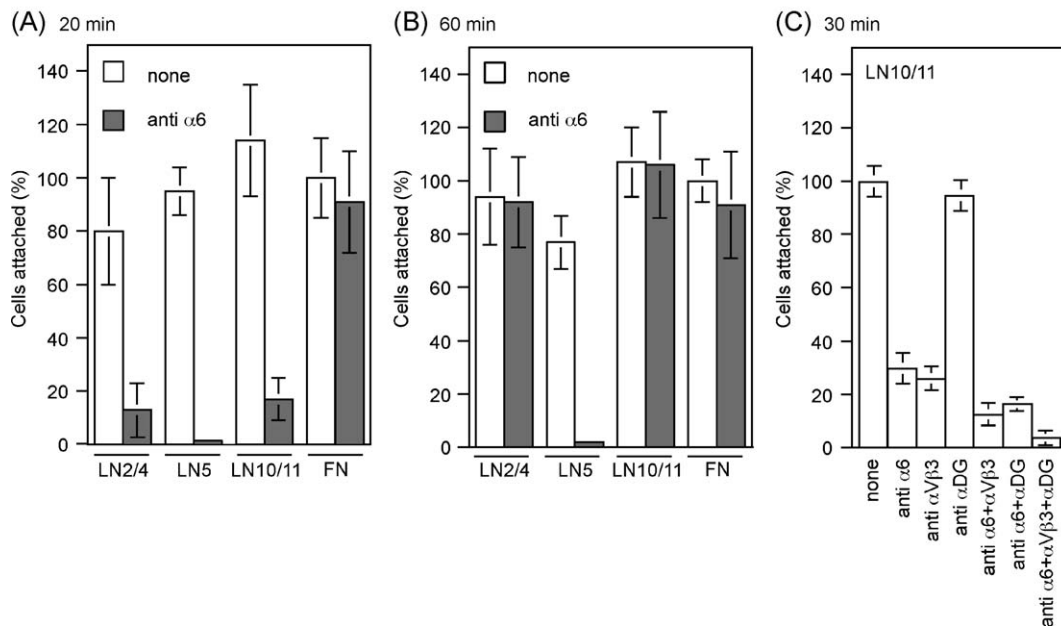


Fig. 4. Role of the integrin  $\alpha 6$  subunit for adhesion of GD25 cells to laminin isoforms. Cells were preincubated with anti- $\alpha 6$  antibody (GoH3) and then incubated in 96-well microtiter plates coated with 10  $\mu\text{g}/\text{ml}$  of laminin-2/4 (LN2/4), laminin-5 (LN5), laminin-10/11 (LN10/11), or 5  $\mu\text{g}/\text{ml}$  of fibronectin for 20 min (A) or 60 min (B) in the absence or presence of GoH3 antibody at 10  $\mu\text{g}/\text{ml}$ . The number of cells adhering to fibronectin in the absence of GoH3 was taken as 100%. Each column represents the mean of triplicate assays. In (C), cells were incubated on laminin-10/11 for 30 min in the presence of 10  $\mu\text{g}/\text{ml}$  of antibody GoH3, LM 609 against  $\alpha 5\beta 3$ , IIH6 against dystroglycan, or in the presence of combinations of GoH3-LM 609 or GoH3-IIH6. Bars indicate standard deviation.

stimulating cell spreading (Fig. 3B). Both preparations were thus used in further studies here, both called laminin-10/11.

Quantitative analysis of cells adhering to surfaces coated with increasing concentrations of proteins showed that fibronectin was the most active in mediating adhesion of GD25 cells, followed by laminin-2/4 and -10/11. Laminin-5 was almost as adhesive as laminin-2/4 or -10/11, but laminin-1 was still a poor adhesive substrate at 20  $\mu\text{g}/\text{ml}$  and some measurable binding could only be noted at significantly higher coating concentrations (Fig. 3C). Quantification of cell spreading revealed a distinct difference between the properties of laminin-5 and the two other adhesive laminins. Thus, most of the bound GD25 cells spread on fibronectin and on laminin-10/11 or laminin-2/4, but very few cells spread on laminin-5 (Fig. 3D) despite the distinct binding of these cells to laminin-5 (Fig. 3C). GD25 cells transfected with  $\beta 1$  integrin did not adhere more efficiently on laminin-5 than  $\beta 1$  integrin-deficient GD25 cells, whereas GD25 cell spreading on laminin-5 was significantly enhanced by transfection of the  $\beta 1$  integrin subunit (Fig. 3E).

#### *Integrin $\alpha 6\beta 4$ as a major GD25 cell adhesion receptor for three laminin isoforms*

Integrin  $\alpha 6\beta 4$  has been reported to be a receptor for laminin-1, -2/4, and -5 [5,29,30]. K562 cells transfected

with  $\alpha 6$  and  $\beta 4$  integrin-expressing constructs bind laminin-10/11, but the presence of  $\beta 1$  integrins on K562 cells made definite conclusions difficult [15]. To firmly establish that integrin  $\alpha 6\beta 4$  can attach cells to laminin isoforms in the absence of  $\beta 1$  integrins, we examined whether the anti-integrin  $\alpha 6$  monoclonal antibody (GoH3) can block GD25 cell adhesion to laminin 2/4, -5, or -10/11. Adhesion onto surfaces coated with laminin-2/4, -5, or -10/11 was inhibited by the integrin  $\alpha 6$  antibody in assays carried out for 20 min (Fig. 4A), but not with the dystroglycan IIH6 antibody (data not shown). In assays carried out for 60 min, the integrin  $\alpha 6$  antibody still blocked cell adhesion to laminin-5. In contrast, the cells could overcome the inhibitory affect of the integrin  $\alpha 6$  antibody when kept on laminin-2/4 or -10/11 for 60 min (Fig. 4B). Two possible explanations for this are receptor recycling [31] leading to reappearance of integrin  $\alpha 6\beta 4$  not bound to the antibody, or presence of additional receptors. To study whether additional receptors contributed to GD25 cell binding to laminin-10/11, we tested combinations of antibodies. In 60-min assays, the combination of antibodies against  $\alpha 6$  integrin, dystroglycan, or integrin  $\alpha 5\beta 3$  did not block GD25 cell adhesion to laminin-10/11 (data not shown). However, in adhesion assays carried out for 30 min, anti- $\alpha 5\beta 3$  decreased adhesion to laminin-10/11 by about 75%. The combination of anti- $\alpha 6/\alpha 5\beta 3$ , anti- $\alpha 6$ /dystroglycan, and the triple combination anti- $\alpha 6/\alpha 5\beta 3$ /dystroglycan reduced cell adhesion to laminin-10/11 slightly more efficiently than the antibody against integrin

$\alpha 6$  (Fig. 4C). This is in line with recent findings that integrin  $\alpha \nu \beta 3$  and dystroglycan can recognize laminin-10/11 [7,8,32,33].

No inhibitory effect on cell adhesion to laminin isoforms -2/4, -5, or -10/11 was observed by the anti-integrin  $\beta 4$  monoclonal antibody 346-11A (data not shown). There are no well-characterized blocking antibodies against mouse integrin  $\beta 4$ . To confirm that the partner of integrin  $\alpha 6$  subunit in GD25 cells is the integrin  $\beta 4$  subunit, immunoprecipitation and immunoblotting were performed. GD25 cells were cell surface biotinylated and subjected to immunoprecipitation with anti-integrin  $\alpha 6$  monoclonal antibody. As shown previously for GD25 cells [18], the antibody precipitated a protein complex, which by SDS-PAGE was resolved into two bands of 140 and 200 kDa, typical for the  $\alpha 6$  and  $\beta 4$  integrin subunits (Fig. 5A). Immunoblotting of integrin  $\beta 4$  confirmed that the immune complex precipitated by anti-integrin  $\alpha 6$  antibody contained a 200-kDa integrin  $\beta 4$  subunit (Fig. 5B).

Alternative splicing and post-translational modifications can produce several forms of the  $\alpha 6 \beta 4$  integrin with different biological properties. To date, two cytoplasmic variants of integrin  $\alpha 6$  subunit,  $\alpha 6A$  and  $\alpha 6B$ , have been identified [11,25]. RT-PCR using the primer set 1156/1157 revealed a band of 556 bp that corresponds to  $\alpha 6A$  (Fig. 5C). Five distinct mRNA variants of integrin  $\beta 4$  subunit are known, each altering the cytoplasmic domain, designated  $\beta 4A$  [34],  $\beta 4B$  [35],  $\beta 4C$  [36],  $\beta 4D$  [27], and  $\beta 4E$  [37]. The 679/680 and 681/682 primer sets span the region, which is alternatively spliced to produce variants  $\beta 4A$ ,  $\beta 4B$ , or  $\beta 4C$  [26]. RT-PCR using these two primer sets revealed bands of

319 and 259 bp that correspond to the  $\beta 4A$  variant. The primer set MITGB409/MITGB412 was used to distinguish between the  $\beta 4A$  and  $\beta 4D$  variant that contains a 21-bp deletion [27]. RT-PCR using this primer set revealed a band of 89 bp, which corresponds to  $\beta 4A$  (Fig. 5D). Sequencing of the PCR product identified the sequence as  $\beta 4A$  (not shown). Because the predicted molecular mass of integrin  $\beta 4E$  subunit is 107 kDa [38] and we only detected a single 200-kDa  $\beta 4$  band by immunoprecipitation (Fig. 5A), the possibility of integrin  $\beta 4E$  subunit was excluded. Hence, of the many possible integrin  $\alpha 6 \beta 4$  variants, GD25 cells express only integrin  $\alpha 6A \beta 4A$ .

#### *Dystroglycan as a non-integrin laminin receptor of GD25 cells*

Adhesion assays suggested some involvement of dystroglycan and integrin  $\alpha \nu \beta 3$  in GD25 cell binding to laminin-10/11. GD25 cell integrin  $\alpha \nu \beta 3$  has been described [16], but dystroglycan has not been demonstrated from GD25 cells. Here we characterize GD25 cell dystroglycan and its laminin-binding properties. After biotinylation of the cell-surface, a cell lysate was passed over a  $\beta 4$  integrin antibody-Sepharose column to remove integrin  $\alpha 6 \beta 4$  and then applied to a laminin-2/4 Sepharose column. Two biotinylated proteins of molecular masses 120 and 43 kDa were eluted by a buffer containing 10 mM EDTA (Fig. 6A), suggesting that a small 120-kDa form of  $\alpha$ -dystroglycan and the 43-kDa  $\beta$ -dystroglycan had been eluted. Immunoblotting with IIH6 antibody against  $\alpha$ -dystroglycan and AP83 antibodies against  $\beta$ -dystroglycan

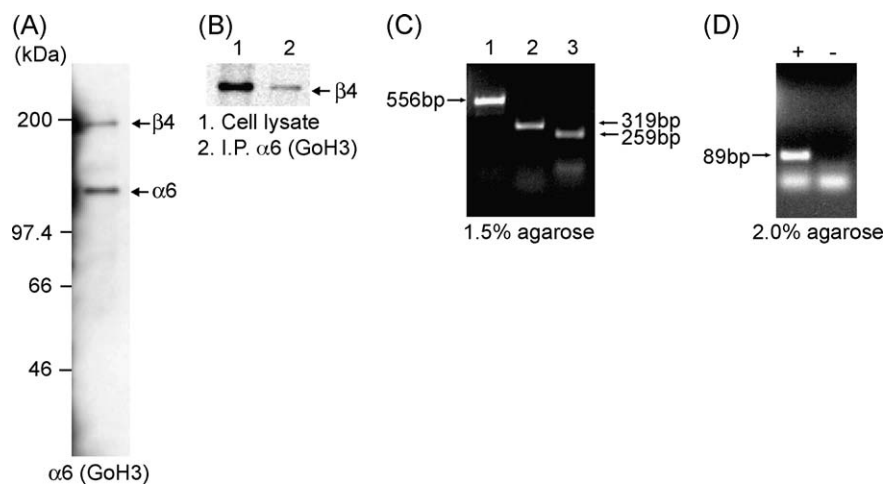


Fig. 5. Identification of the subunit associated with integrin  $\alpha 6$  in GD25 cells lacking the integrin  $\beta 1$  subunit and splice variants of  $\alpha 6$  and  $\beta 4$ . (A) Cells were labeled with biotin and cell lysates were immunoprecipitated with monoclonal antibody against integrin  $\alpha 6$  (GoH3). Immunoprecipitated proteins were separated on 7.5% gel under reducing conditions and transferred to PVDF membrane. Biotinylated proteins were detected as described in Materials and methods. (B) Cell lysates and immunoprecipitated proteins were subjected to SDS-PAGE under reducing condition and immunoblotted with an anti-integrin  $\beta 4$  antibody. (C) Analysis of alternative splice variants of integrin  $\alpha 6 \beta 4$  expressed in GD25 cells. RT-PCR analysis using four different primer sets described in Materials and methods. The 1156/1157 (lane1) primer set spans the region that is alternatively spliced to produce integrin  $\alpha 6A$  and  $\alpha 6B$  subunits. The 556-bp band corresponds to integrin  $\alpha 6A$  subunit [25]. (Lane 2) The 679/680 (lane2) and 681/682 (lane3) primer sets span the region, which is alternatively spliced to produce variants  $\beta 4A$ ,  $\beta 4B$ , or  $\beta 4C$  [26]. The amplified 319- and 259-bp bands correspond to  $\beta 4A$ , respectively. (D) The MITGB409/MITGB412 primer sets span the region that is alternatively spliced to produce the  $\beta 4D$  variant that contains a 21-bp deletion [27]. The amplified 89-bp band correspond to  $\beta 4A$ . -, no template cDNA.



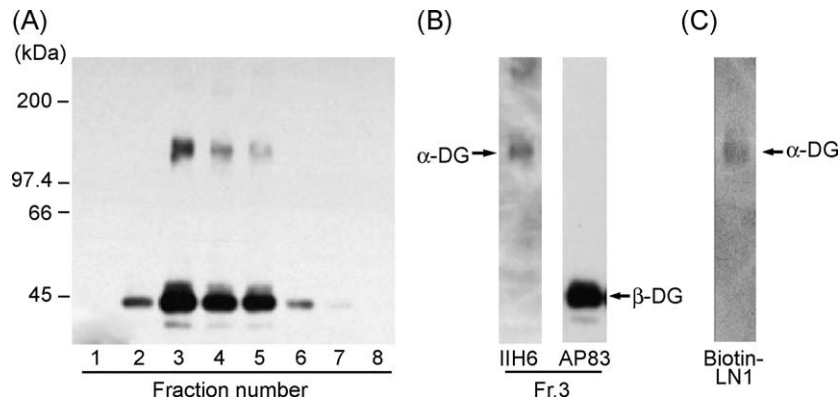


Fig. 6. Cell-surface proteins eluted from a laminin-2/4-Sepharose column. (A) Biotin-labeled GD25 cells were solubilized in lysis buffer containing 200 mM octyl- $\beta$ -D-glucopyranoside and extract was passed through anti-integrin  $\beta$ 4 antibody-Sepharose column. Flow through was applied to a laminin-2/4-Sepharose column. After washing, the column was eluted with buffer containing 10 mM EDTA. Fractions were separated on a 7.5% gel under nonreducing conditions and transferred to PVDF membrane. Biotinylated proteins were detected as described in Materials and methods. (B) Eluted proteins were also subjected to SDS-PAGE under nonreducing condition and immunoblotted with IIH6 antibody against  $\alpha$ -dystroglycan or AP83 antibody against  $\beta$ -dystroglycan. (C) Detection of  $\alpha$ -dystroglycan by a biotin-laminin-1 overlay assay. Biotin-labeled laminin-1 at 1  $\mu$ g/ml in 10 mM Tris-HCl (pH 7.5), 150 mM NaCl, 1 mM  $\text{CaCl}_2$ , 1 mM  $\text{MgCl}_2$  was applied onto the same membrane as in B.

confirmed that the bands of 120 and 43 kDa contain  $\alpha$ - and  $\beta$ -dystroglycan, respectively (Fig. 6B). The ability of GD25 cell-derived  $\alpha$ -dystroglycan to bind other laminins was demonstrated by biotin-laminin-1 overlay of the same membrane. Biotin-labeled laminin-1 detected a band of 120 kDa (Fig. 6C).

It has been reported that dystroglycan recognizes laminin-10/11 but not laminin-5 [32,33], although it was predicted based on structural analyses that neither of these two variants should bind dystroglycan [39]. We therefore compared binding of GD25 cell dystroglycan to laminin-5 and -10/11 using affinity chromatography. Extracts of GD25 cells were applied either to a laminin-5- or -10/11 column, eluted by EDTA, run on a gel, and immunoblotted with AP83  $\beta$ -dystroglycan antibody. This revealed that most of the dystroglycan in the cell extract bound to the laminin-10/11 column and was eluted with buffer containing EDTA. In contrast, only minimal binding of dystroglycan to the laminin-5-column was observed (Fig. 7). The laminin-5 preparation used in this study was composed of 160- to 165-, 140-, and 105-kDa subunits (Fig. 1). The 160- to 165-kDa band corresponds to the laminin  $\alpha$ 3A variant lacking the LG4-5 domains, the 140-kDa band to laminin  $\beta$ 3 chain, and the 105-kDa band to the proteolytically cleaved  $\gamma$ 2 chain [40,41]. Based on the molecular mass, we conclude that the laminin  $\alpha$ 3A chain lacks the LG4-5 modules. The corresponding LG modules are responsible for dystroglycan binding in some other laminins [33,39]. We can therefore not exclude the possibility that nonprocessed forms of laminin-5 bind dystroglycan. However, structural studies have predicted that none of the LG domains of laminin  $\alpha$ 3, the  $\alpha$ -chain of laminin-5, should show high-affinity binding to dystroglycan [39]. Finally, it is important to note that proteolytic processing of laminin-5 is considered to be a physiological *in vivo* process.

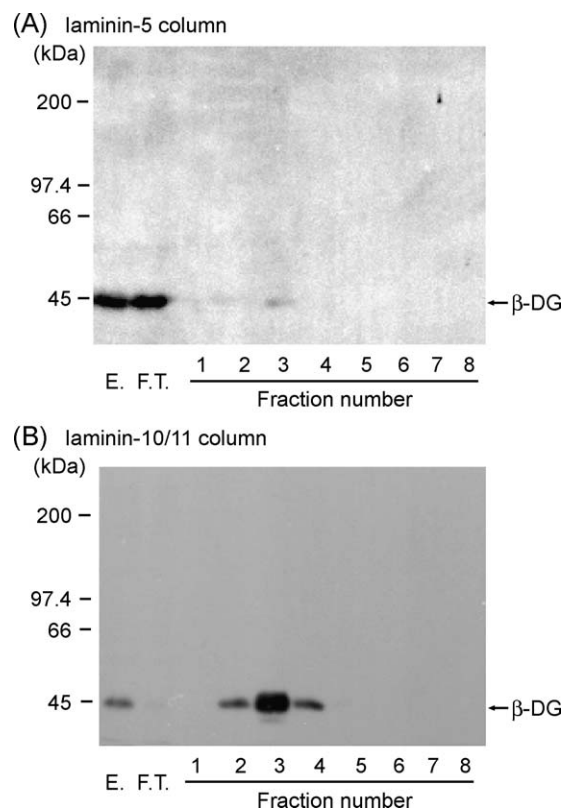


Fig. 7. Binding of dystroglycan to laminin-5 and laminin-10/11. One hundred micrograms of purified laminin-5 or laminin-10/11 was bound to 0.8 ml of Sepharose-coupled anti-laminin  $\gamma$ 2 polyclonal antibody or to Sepharose-coupled anti-laminin  $\beta$ 1/2 monoclonal antibodies. GD25 cells were solubilized in lysis buffer containing 200 mM octyl- $\beta$ -D-glucopyranoside and extracts were passed over a laminin-5 column (A) or laminin-10/11-column (B). After washing, columns were eluted with buffer containing 10 mM EDTA. Fractions were separated on a 7.5% gel under nonreducing conditions and transferred to a PVDF membrane. Eluted proteins were subjected to SDS-PAGE under nonreducing conditions and immunoblotted with anti- $\beta$ -dystroglycan antibody AP83.

### Cell proliferation and MAP-kinase activation mediated by adhesion of GD25 cells to laminin isoforms

It is well known that extracellular matrix components can control cell growth and survival. To investigate whether growth can be stimulated by laminins in the absence of  $\beta 1$  integrins, incorporation of bromodeoxyuridine (BrdU) into DNA was measured. Quiescent cells were detached and held in suspension or replated on wells coated with laminin isoforms, fibronectin, or poly-L-lysine for 3 h. In cells plated on laminin-2/4, laminin-10/11, and fibronectin, incorporation of BrdU was enhanced, while a similar enhancement was not seen in cells plated on poly-L-lysine or laminin-5 (Fig. 8).

Cell proliferation induced by attachment to matrix components *in vitro* correlates both with cell spreading and activation of the mitogen-activated protein (MAP) kinase family [42,43]. We therefore investigated whether two members of the MAP-kinase family extracellular signal-regulated kinases 1 and 2 (ERK1/2) are stimulated by laminin isoforms in GD25 cells. Quiescent cells were detached and held in suspension, or replated on wells coated with laminin isoforms or fibronectin for 60 min. In cells plated on laminin-2/4 and on either one of the two laminin-10/11 preparations, phosphorylated forms of ERK1/2 increased markedly (2.5–3 times) in comparison to cells maintained in suspension. Only slight activation (1.8 times increase) was observed in cells replated on fibronectin, while no significant activation was observed in cells replated on laminin-1 or laminin-5 (Fig. 9). The kinetics of ERK1/2 activation was examined at different times after plating the cells on laminin-2/4 or laminin-10/11. Significant activation of ERK1 was detected at 30 min and sustained for over 120 min (data not shown).

GD25 cells used the same receptor, integrin  $\alpha 6\beta 4$ , for initial adhesion to laminin-2/4, -5, and -10/11. Never-

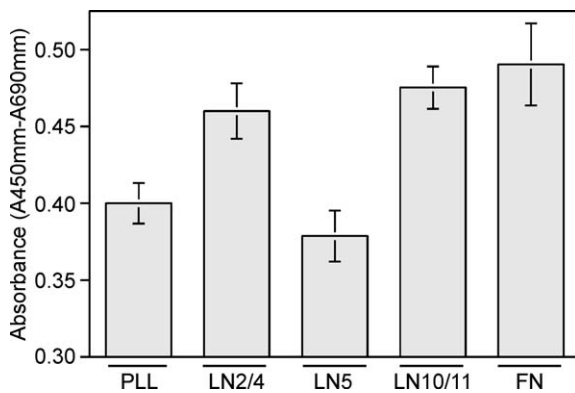


Fig. 8. Induction of DNA synthesis upon adhesion of GD25 cells on laminin substrata. Quiescent GD25 cells were replated onto wells coated 10  $\mu$ g/ml of poly-L-lysine (PLL), laminin-2/4, laminin-5, laminin-10/11, or 5  $\mu$ g/ml of fibronectin in serum-free DMEM containing 10  $\mu$ M of BrdU. Cells were incubated for 3 h. BrdU incorporation into DNA was measured colorimetrically. Each column represents the mean of triplicate assays. Bars indicate standard deviations.

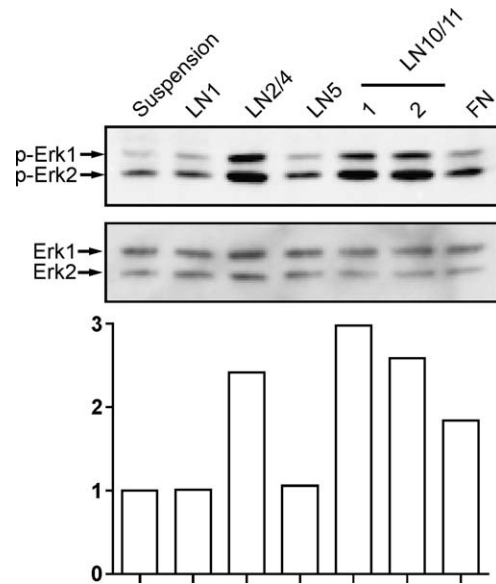


Fig. 9. ERK1/2 activation in cells attached to laminin isoforms or fibronectin. Quiescent GD25 cells were either maintained in suspension or plated on wells coated with 40  $\mu$ g/ml of laminin-1, 10  $\mu$ g/ml of laminin-2/4, laminin-5, laminin-10/11 (1; intact laminin-10/11, 2; pepsin-digested laminin-10/11), or 5  $\mu$ g/ml of fibronectin in serum-free medium for 60 min. SDS-PAGE sample buffer containing 2-mercaptoethanol was added to each well and cells lysed. Equal amounts of whole cell lysates were subjected to SDS-PAGE, activated ERK1 and ERK2 were detected by immunoblotting with phospho-ERK1/2-specific polyclonal antibody (upper panel). The same membrane was stripped, and total ERK1/2 was detected by using ERK1/2 polyclonal antibody (middle panel). Quantitative measurements of the phosphorylation status of ERK1/2. Phosphorylation of ERK1/2 in cells kept in suspension was set as 1.0 (lower panel).

theless, GD25 cell binding to laminin-5 failed to induce spreading of or ERK activation in GD25 cells, whereas cell binding to laminin -2/4 or -10/11 induced these events. Integrin  $\alpha 6\beta 4$  signaling probably requires both localization of the receptor to focal contacts and tyrosine phosphorylation of the integrin subunits. We therefore examined whether integrin  $\beta 4$  was present in adhesion complexes in cells on the different substrates and whether it was phosphorylated. In cells plated on laminin-10/11, integrin  $\beta 4$  was present together with filamentous actin in focal adhesion structures, whereas in cells plated on laminin-5, no such structures could be detected (Fig. 10). Cells plated on laminin-10/11 also displayed tyrosine phosphorylation of integrin  $\beta 4$  as well as tyrosine phosphorylation of several proteins brought down by immunoprecipitation with anti-integrin  $\beta 4$  antibodies. One band corresponds in size to integrin  $\alpha 6$ , indicating phosphorylation also of this subunit. In sharp contrast, no tyrosine phosphorylation of integrin  $\beta 4$  was evident in cells plated on laminin-5 (Fig. 10).

We also examined the role of phosphoinositide 3-OH (PI-3) kinase and MEK for ERK activation by laminin-2/4 and -10/11. MEK is the only known immediate upstream regulator of ERK activation. As expected, the MEK

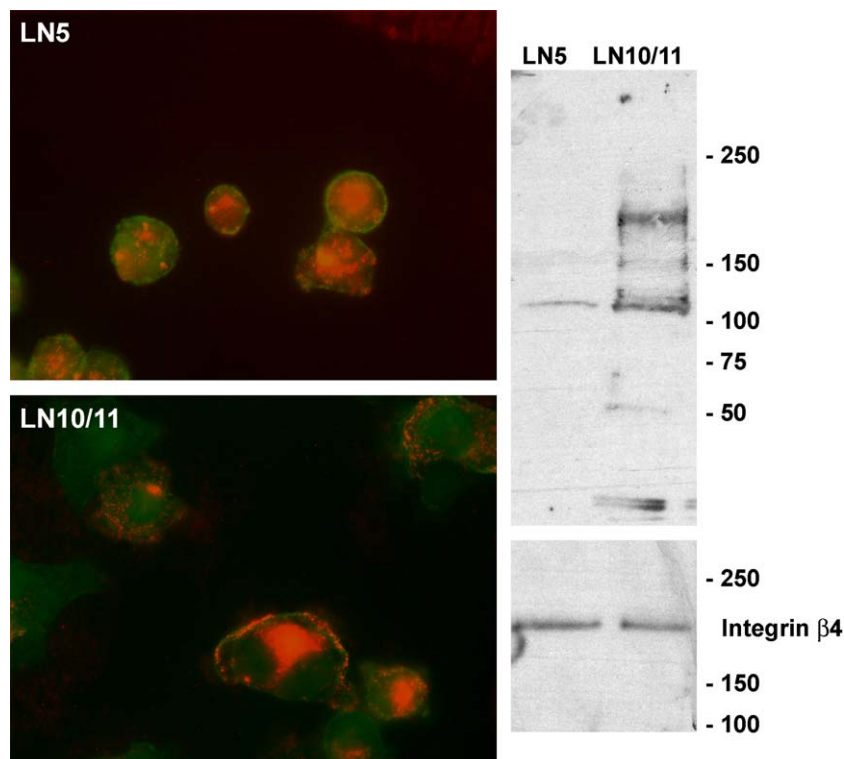


Fig. 10. Integrin  $\beta 4$  in GD25 cells plated on different laminin substrates. Localization of integrin  $\beta 4$  (red) and actin (green) as detected by mAb 346-11A and FITC-labeled phalloidin staining of cells plated on laminin-5 or laminin-10/11 (left panel). Whereas very little integrin  $\beta 4$  (red) can be seen on the surface of cells plated on laminin-5 (left top panel), brilliant staining for integrin  $\beta 4$  (red) can be seen on the surface of many cells plated on laminin-10/11 (left bottom panel). Immunoprecipitation of integrin  $\beta 4$  from cells plated on laminin-5 or laminin-10/11 followed by SDS-PAGE and immunodetection with antibody RC-20 reacting with phosphotyrosine residues (upper right panel) and mAb 346-11A detecting integrin  $\beta 4$  (lower right panel).

inhibitor PD98059 inhibited ERK1/2 activation. The level of phosphorylated ERK1/2 induced by laminins significantly declined also by the PI-3 kinase inhibitor Wortmannin, suggesting activation of ERK1/2 through PI-3 kinase (Fig. 11).

## Discussion

The  $\alpha 6\beta 4$  integrin is an essential component of hemidesmosomes [30], and its interactions with laminins may enhance cancer cell survival [44,45]. Altered expression of

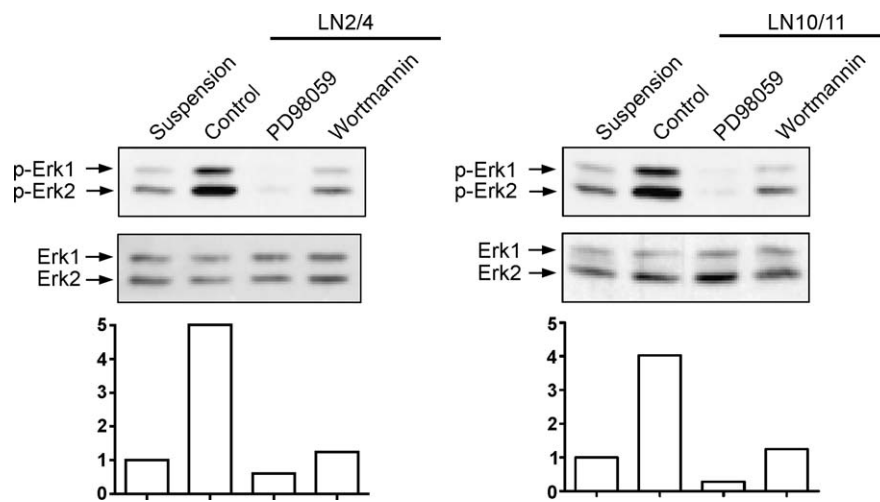


Fig. 11. Involvement of MEK and phosphatidylnol 3-OH kinase in activation of ERK. Effects of MEK inhibitor PD98059 and PI3 kinase inhibitor Wortmannin on ERK1/2 activation induced by laminin-2/4 or laminin-10/11. A suspension of quiescent GD25 cells was incubated with 100  $\mu\text{M}$  of PD98059 or 100 nM of Wortmannin for 10 min. The cells were maintained either in suspension or plated on wells coated with 10  $\mu\text{g}/\text{ml}$  laminin-2/4 and laminin-10/11 in serum-free medium for 60 min. Activation of ERK1/2 was analyzed as described in Fig. 9.

several laminin isoforms is frequently seen in cancer and could significantly influence tumor invasion, angiogenesis, and metastasis [46]. It is therefore important to understand how laminin isoforms influence cells through this receptor. As shown here,  $\beta 1$  integrin-null GD25 cells can be used to dissect the role of different laminin isoforms as integrin  $\alpha 6\beta 4$  ligands. These cells bind poorly to laminin-1 [16], but in the present study we demonstrate distinct, integrin  $\alpha 6\beta 4$ -dependent binding of GD25 cells to laminin-2/4, -5, and -10/11. Although the cells attached equally well to these three laminin isoforms using the same receptor, the cellular response to the binding varied significantly. Thus, the GD25 interaction with laminin-2/4 and -10/11 activated ERK and induced cell spreading and proliferation, whereas adhesion to laminin-5 did not induce any of these cellular responses.

Immunoprecipitation and blotting showed that GD25 cells produced the  $\alpha 6$  subunit coupled to a 200-kDa  $\beta 4$  chain. Two splice variants of  $\alpha 6$  and five  $\beta 4$  variants have been described. Because these may have different biological properties, we determined the nature of the splice variants expressed by GD25 cells. RT-PCR showed that GD25 cells produced only the  $\alpha 6A$  and  $\beta 4A$  variant. These findings combined with antibody perturbation assays identified integrin  $\alpha 6A\beta 4A$  as the main initial receptor for GD25 cell adhesion to all three laminins (laminin-2/4, -5, and -10/11). It is well established that integrin  $\alpha 6\beta 4$  is a receptor for laminin-1, -2/4, and -5 [5,6]. The current findings, taken together with previous studies with cells expressing both  $\beta 4$  and  $\beta 1$  integrins [15], clearly establish integrin  $\alpha 6\beta 4$  as one major receptor for cell binding to laminin-10/11.

Cell adhesion to extracellular matrix can *in vitro* activate numerous intracellular signaling cascades. It is well known that matrix-dependent ERK activation is frequently coupled to cell spreading [43] by not yet fully clarified mechanisms. Both laminin binding  $\beta 1$  integrins and integrin  $\alpha 6\beta 4$  have been linked to the ERK pathway [10,47], but it is not quite clear which receptors are used in laminin-mediated ERK activation and if all laminins can activate ERK. Different laminins may use different receptors for ERK activation. Our recent data [32] support the proposal of Wei et al. [48] that integrin  $\alpha 6A\beta 1$ , but not  $\alpha 6B\beta 1$ , is coupled to ERK activation. In both reports, the studied cells lacked the  $\beta 4$  subunit. In the present study, we instead used cells that lack  $\beta 1$  integrin and express the  $\alpha 6A$  subunit coupled to  $\beta 4A$ . We found that integrin  $\alpha 6A\beta 4A$ -dependent cell adhesion to laminin-2/4 and -10/11 correlated with cell spreading and ERK activation. A significant finding was that cell binding to laminin-10/11 stimulated integrin  $\beta 4A$  phosphorylation. Nevertheless, one cannot conclude that laminin-2/4 and -10/11 mediated cell spreading and ERK activation was mediated by integrin  $\alpha 6A\beta 4A$ . Co-receptors may be responsible for these events and could include integrin  $\alpha v\beta 3$ , which was recently shown to interact with laminin-10/11 [7,8]. Another co-receptor is dystroglycan, but our recent data from other cell types suggest that laminin

binding to dystroglycan decreases integrin  $\alpha 6A\beta 1$ -mediated ERK activation [32].

A most intriguing finding was that laminin-5 was completely inactive in stimulating cell spreading, integrin  $\beta 4$  phosphorylation, ERK activation, or cell proliferation, even though it was a cell-adhesive  $\alpha 6\beta 4$  ligand. This is in apparent conflict with some major proposals in the field. Based mainly on one system using keratinocytes [10], it has been proposed that ligation of integrin  $\alpha 6\beta 4$  to laminin-5 recruits Shc/Grb2-mSOS and subsequently activates the MEK-ERK kinase pathway through Ras [49–51]. Different laminins might use different  $\alpha 6\beta 4$  variants for ERK activation, and in future studies it will now be important to determine the  $\alpha 6\beta 4$  isoform expressed by the cells employed in various assays. Also, the type of laminin-5 used should be clearly indicated. An obvious possibility is that laminin-5 needs co-receptors to induce cell spreading and to activate the ERK pathway. Our findings that laminin-5 induced cell spreading of  $\beta 1$ -integrin-expressing GD25 cells support this view. Moreover, it was recently shown that laminin-5 can activate ERK and cell spreading through integrin  $\alpha 3\beta 1$  [53]. GD25 cells or modified GD25 cells expressing various types of  $\beta 1$  or  $\beta 4$  integrins should be excellent tools to dissect these issues further.

To begin to understand some of the upstream pathways of laminin-induced ERK activation in GD25 cells, we tested some inhibitors of signaling molecules. In some cells, signaling along the Ras-ERK cascade is blocked at the level of the activation of either Raf or MEK in absence of attachment [54,55]. Integrins may remove this block, perhaps by activating Rac or PI-3 kinase [56]. In fact, laminin-10/11 has recently been shown to strongly activate Rac and Akt, downstream of phosphoinositide 3-OH (PI-3) kinase, in lung carcinoma cells expressing both  $\beta 1$  and  $\beta 4$  integrins [57], but the responsible receptors remain to be identified. In GD25 cells, the activation of ERK1/2 by laminin-2/4 and laminin-10/11 seems to be dependent on PI-3 kinase because the PI3 kinase inhibitor Wortmannin could block this activation. Our findings with GD25 cells indicate that both laminin-10/11 and -2/4 can activate ERK in the absence of  $\beta 1$  integrins, and suggest PI-3 kinase as one upstream regulator.

The exact role of dystroglycan for GD25 cell interactions with the laminins remains unclear, but several findings emphasize the importance to further study this laminin receptor in the GD25 model system. The dystroglycan antibody did not block the initial GD25 cell adhesion to laminins, and yet affinity chromatography revealed that both laminin 2/4 and -10/11 bound to a complex identified as dystroglycan. GD25 cells were shown to produce a 120-kDa  $\alpha$ -dystroglycan subunit and a 43-kDa  $\beta$ -dystroglycan subunit. The GD25 cell-derived  $\alpha$ -dystroglycan is smaller than those found in many adult tissues, but smaller isoforms with capacity to bind laminin-1 have been demonstrated, particularly in embryonic tissues [58]. The recognition of laminin-10/11 is notable because the laminin globular modules of the

$\alpha 5$  chain of laminin-10/11 lack the typical calcium-binding sites required for dystroglycan binding to  $\alpha 2$  laminin [39]. However, the recognition of dystroglycan by laminin-10/11 is in agreement with recent findings using other approaches. Overlay assays have demonstrated that purified laminin-10/11 can bind muscle and kidney dystroglycan, and low affinity binding was also demonstrated in solid phase assays [32,33]. It is important to note that the function-blocking antibody IIIH6 has been described to block interactions between laminin-1 and dystroglycan, and it does not necessarily act as an efficient blocking antibody of dystroglycan binding to other laminins. Therefore, it cannot be excluded that dystroglycan is involved in GD25 cell adhesion to laminins.

Considering the current results that GD25 cells express two major laminin-1 receptors—dystroglycan and integrin  $\alpha 6\beta 4$ —it is surprising that GD25 cells bind so poorly to laminin-1. We could show that laminin-1 can bind to a 120-kDa form of dystroglycan isolated from GD25 cells in affinity chromatography assays, but neither this binding nor the presence of integrin  $\alpha 6\beta 4$  was sufficient to allow GD25 cells to adhere to laminin-1 in cell attachment assays. Transfection of  $\beta 1$  integrin to these cells leads to expression of several  $\beta 1$  integrins including  $\alpha 6\beta 1$  and confers cell adhesiveness to laminin-1 [16,59], confirming that integrin  $\alpha 6\beta 1$  is a major receptor for cell adhesion to laminin-1. However, several mouse and human hematopoietic cell types use  $\alpha 6\beta 1$  integrin to adhere to laminin-10/11, but nevertheless do not adhere to laminin-1 [60,61]. Binding of cells to laminin-10/11 is thus in several settings less dependent on co-receptors or some integrin activation processes than binding of cells to laminin-1.

In summary, laminin isoforms interact with integrin  $\alpha 6\beta 4$  in more distinct fashions than previously recognized. GD25 cells are thus powerful tools to dissect the role of laminin isoforms as ligands for integrin  $\alpha 6\beta 4$ . Finally, we demonstrate that GD25 cells express dystroglycan, which can bind laminins. The lessons from the GD25 cell system could be relevant for other cell types. Integrin  $\alpha 6\beta 4$  is involved in carcinoma progression [44,45]. In normal skin, laminin-5 and laminin-10/11 have essential but non-overlapping functions, with laminin-5 promoting epidermal adhesion and laminin-10 promoting epithelial development [30,62,63]. Our data raise the possibility that this in part is due to their differential ability to interact with integrin  $\alpha 6\beta 4$ .

## Acknowledgments

This work was supported by a postdoctoral stipend from Wenner-Gren Foundation to Y. Kikkawa, the Swedish Foundation for International Cooperation in Research and Higher Education (STINT), the Swedish Cancer Society, the Swedish Natural Science Research Council, Magnus Bergvalls Foundation, Åke Wibergs Foundation, and Barncancerfonden. K.P. Campbell is an Investigator of the Howard Hughes Medical Institute.

## References

- [1] H. Colognato, P.D. Yurchenco, Form and function: the laminin family of heterotrimers, *Dev. Dyn.* 218 (2000) 213–234.
- [2] J.H. Miner, P.L. Patton, S.I. Lentz, D.J. Gilbert, W.D. Snider, N.A. Jenkins, N.G. Copeland, J.R. Sanes, The laminin  $\alpha$  chains: expression, developmental transitions, and chromosomal locations of  $\alpha 1$ –5, identification of heterotrimeric laminins 8–11, and cloning of a novel  $\alpha 3$  isoform, *J. Cell Biol.* 137 (1997) 685–701.
- [3] M. Ekblom, M. Falk, K. Salmivirta, M. Durbeecj, P. Ekblom, Laminin isoforms and epithelial development, *Ann. N. Y. Acad. Sci.* 857 (1998) 194–211.
- [4] R.T. Libby, M.F. Champlaud, T. Claudepierre, Y. Xu, E.P. Gibbons, M. Koch, R.E. Burgeson, D.D. Hunter, W.J. Brunken, Laminin expression in adult and developing retinae: evidence of two novel CNS laminins, *J. Neurosci.* 20 (2000) 6517–6528.
- [5] A.M. Mercurio, Laminin receptors: achieving specificity through cooperation, *Trends Cell Biol.* 5 (1995) 419–423.
- [6] M. Aumailley, N. Smyth, The role of laminins in basement membrane function, *J. Anat.* 193 (1998) 1–21.
- [7] T. Sasaki, R. Timpl, Domain IVa of laminin  $\alpha 5$  chain is cell-adhesive and binds  $\beta 1$  and  $\alpha \nu \beta 3$  integrins through Arg-Gly-Asp, *FEBS Lett.* 509 (2001) 181–185.
- [8] E. Genersch, M. Ferletta, I. Virtanen, H. Haller, P. Ekblom, Integrin  $\alpha \nu \beta 3$  binding to human  $\alpha 5$  laminins facilitates FGF-2 and VEGF-induced proliferation of human ECV304 carcinoma cells, *Eur. J. Cell Biol.* 82 (2003) 105–117.
- [9] M.D. Henry, K.P. Campbell, Dystroglycan inside and out, *Curr. Opin. Cell Biol.* 11 (1999) 602–607.
- [10] F.G. Giancotti, E. Ruoslahti, Integrin signalling, *Science* 285 (1999) 1028–1032.
- [11] A.A. de Melker, A. Sonnenberg, Integrins: alternative splicing as a mechanism to regulate ligand binding and integrin signaling events, *BioEssays* 21 (1999) 499–509.
- [12] P. Ekblom, P. Lonai, J.F. Talts, Expression and biological role of laminin-1, *Matrix Biol.* 22 (2003) 35–47.
- [13] S. Li, D. Edgar, R. Fässler, W. Wadsworth, P.D. Yurchenco, The role of laminin in embryonic cell polarization and tissue organization, *Dev. Cell* 5 (2003) 613–624.
- [14] M.D. Henry, K.P. Campbell, A role for dystroglycan in basement membrane assembly, *Cell* 95 (1998) 859–870.
- [15] Y. Kikkawa, N. Sanzen, H. Fujiwara, A. Sonnenberg, K. Sekiguchi, Integrin binding specificity of laminin-10/11: laminin-10/11 are recognized by  $\alpha 3\beta 1$ ,  $\alpha 6\beta 1$  and  $\alpha 6\beta 4$  integrins, *J. Cell Sci.* 113 (2000) 869–876.
- [16] K. Wennerberg, L. Lohikangas, D. Gullberg, M. Pfaff, S. Johansson, R. Fässler,  $\beta 1$  integrin-dependent and independent polymerization of fibronectin, *J. Cell Biol.* 132 (1996) 227–238.
- [17] T. Sakai, O. Peyruchaud, R. Fässler, D.F. Mosher, Restoration of  $\beta 1A$  integrins is required for lysophosphatidic acid-induced migration of  $\beta 1$ -null mouse fibroblastic cells, *J. Biol. Chem.* 273 (1998) 19378–19382.
- [18] S.F. Retta, F. Balzak, P. Ferraris, A.M. Belkin, R. Fässler, M.J. Humphries, G. De Leo, L. Silenzo, G. Tarone,  $\beta 1$ -Integrin cytoplasmic subdomains involved in dominant negative functions, *Mol. Biol. Cell.* 9 (1998) 715–731.
- [19] M. Ferletta, P. Ekblom, Identification of laminin-10/11 as a strong cell adhesive complex for a normal and a malignant human epithelial cell line, *J. Cell Sci.* 112 (1999) 1–10.
- [20] Y. Fukushima, T. Ohnishi, N. Arita, T. Hayakawa, K. Sekiguchi, Integrin  $\alpha 3\beta 1$ -mediated interaction with laminin-5 stimulates adhesion, migration, and invasion of malignant glioma cells, *Int. J. Cancer* 76 (1998) 63–72.
- [21] Y. Kikkawa, N. Sanzen, K. Sekiguchi, Isolation and characterization of laminin-10/11 secreted by human lung carcinoma cells: laminin-10/11 mediates cell adhesion through integrin  $\alpha 3\beta 1$ , *J. Biol. Chem.* 273 (1998) 15854–15859.

- [22] J.M. Ervasti, K.P. Campbell, A role for the dystrophin-glycoprotein complex as a transmembrane linker between laminin and actin, *J. Cell Biol.* 122 (1993) 809–823.
- [23] C.F. Tiger, M.F. Champlaud, F. Pedrosa-Domellof, L.E. Thornell, P. Ekblom, D. Gullberg, Presence of laminin  $\alpha 5$  chain and lack of laminin  $\alpha 1$  chain during human muscle development and in muscular dystrophies, *J. Biol. Chem.* 272 (1997) 28590–28595.
- [24] R. Fässler, M. Pfaff, J. Murphy, A. Noegel, S. Johansson, R. Timpl, R. Albrecht, Lack of  $\beta 1$  integrin gene in embryonic stem cells affects morphology, adhesion, and migration but not integration into the inner cell mass of blastocysts, *J. Cell Biol.* 128 (1995) 979–988.
- [25] H.M. Cooper, R.N. Tamura, V. Quaranta, The major laminin receptor of mouse embryonic stem cells is a novel isoform of the  $\alpha 6\beta 1$  integrin, *J. Cell Biol.* 115 (1991) 843–850.
- [26] S.J. Kennel, L.J. Foote, L. Cimino, M.G. Rizzo, L. Chang, A. Sacchi, Sequence of a cDNA encoding the  $\beta 4$  subunit of murine integrin, *Gene* 130 (1993) 209–216.
- [27] A.S. Clarke, M.M. Lotz, A.M. Mercurio, A novel structural variant of the human  $\beta 4$  integrin cDNA, *Cell Adhes. Commun.* 2 (1994) 1–6.
- [28] E. Engvall, G.E. Davis, K. Dickerson, E. Ruoslahti, M. Manthorpe, Mapping of domains of human laminin using monoclonal antibodies: localization of the neurite-promoting site, *J. Cell Biol.* 103 (1986) 2457–2465.
- [29] L. Spinardi, S. Einheber, T. Cullen, T.A. Milner, F.G. Giancotti, A recombinant tail-less integrin  $\beta 4$  subunit disrupts hemidesmosomes, but does not suppress  $\alpha 6\beta 4$ -mediated cell adhesion to laminins, *J. Cell Biol.* 129 (1995) 473–487.
- [30] L. Borradori, A. Sonnenberg, Hemidesmosomes: roles in adhesion, signaling and human disease, *Curr. Opin. Cell Biol.* 8 (1996) 647–656.
- [31] T. Ng, D. Shima, A. Squire, P.I.H. Bastiaens, S. Gschmeissner, M.J. Humphries, P.J. Parker, PKC $\alpha$  regulates  $\beta 1$  integrin-dependent cell motility through association and control of integrin traffic, *EMBO J.* 18 (1999) 3909–3923.
- [32] M. Ferletta, Y. Kikkawa, H. Yu, J.F. Talts, M. Durbeej, R. Timpl, A. Sonnenberg, K.P. Campbell, P. Ekblom, E. Genersch, Opposing roles of integrin  $\alpha 6\beta 1$  and dystroglycan in laminin-mediated ERK activation, *Mol. Biol. Cell* 14 (2003) 2088–2103.
- [33] H. Yu, J.F. Talts,  $\beta 1$  integrin and  $\alpha$ -dystroglycan binding sites are localized to different laminin-G-domain-like (LG) modules within the laminin  $\alpha 5$  chain G domain, *Biochem. J.* 371 (2003) 289–299.
- [34] S. Suzuki, Y. Naitoh, Amino acid sequence of a novel integrin  $\beta 4$  subunit and primary expression of the mRNA in epithelial cells, *EMBO J.* 9 (1990) 757–763.
- [35] F. Hogervost, I. Kuikman, A.E. von dem Borne, A. Sonnenberg, Cloning and sequence analysis of  $\beta 4$  cDNA: an integrin subunit that contains a unique 118 kd cytoplasmic domain, *EMBO J.* 9 (1990) 765–770.
- [36] R.N. Tamura, C. Rozzo, L. Starr, L.F. Reichardt, H.M. Cooper, V. Quaranta, Epithelial integrin  $\alpha 6\beta 4$ : complete primary structure of  $\alpha 6$  and variant forms of  $\beta 4$ , *J. Cell Biol.* 111 (1990) 1593–1604.
- [37] M.R. van Leusden, I. Kuikman, A. Sonnenberg, The unique cytoplasmic domain of the human integrin variant  $\beta 4E$  is produced by partial retention of intronic sequence, *Biochem. Biophys. Res. Commun.* 235 (1997) 826–830.
- [38] N. Basora, F.E. Herrring-Gillam, F. Boudreau, N. Perreault, L.P. Pageot, N. Simoneau, Y. Bouatrouss, J.-F. Beaulieu, Expression of functionally distinct variants of the  $\beta 4A$  integrin subunit in relation to the differentiation state in human intestinal cells, *J. Biol. Chem.* 274 (1999) 29819–29825.
- [39] R. Timpl, D. Tisi, J.F. Talts, Z. Andac, T. Sasaki, E. Hohenester, Structure and function of laminin LG modules, *Matrix Biol.* 19 (2000) 309–317.
- [40] L.E. Goldfinger, M.S. Stack, J.C.R. Jones, Processing of laminin-5 and its functional consequences: role of plasmin and tissue-type plasminogen activator, *J. Cell Biol.* 141 (1998) 255–265.
- [41] M. Aumailley, A. El Khal, N. Knoss, L. Tunggal, Laminin-5 processing and its integration into the extracellular matrix, *Matrix Biol.* 22 (2003) 49–54.
- [42] R.K. Assoian, X. Zhu, Cell anchorage and the cytoskeleton as partners in growth factor dependent cell cycle progression, *Curr. Opin. Cell Biol.* 9 (1997) 93–98.
- [43] S. Huang, D.E. Ingber, The structural and mechanical complexity of cell-growth control, *Nat. Cell Biol.* 1 (1999) E131–E138.
- [44] L.M. Shaw, I. Rabinovitz, H.H. Wang, A. Toker, A.M. Mercurio, Activation of phosphoinositide 3-OH kinase by the  $\alpha 6\beta 4$  integrin promotes carcinoma invasion, *Cell* 91 (1997) 49–960.
- [45] V.M. Weaver, S. Lelièvre, J.N. Lakins, M.A. Chrenek, J.C.R. Jones, F. Giancotti, Z. Werb, M.J. Bissell,  $\beta 4$  integrin-dependent formation of polarized three-dimensional architecture confers resistance to apoptosis in normal and malignant mammary epithelium, *Cancer Cell* 2 (2002) 205–216.
- [46] P. Patarroyo, K. Tryggvason, I. Virtanen, Laminin isoforms in tumor invasion, angiogenesis and metastasis, *Semin. Cancer Biol.* 12 (2002) 197–207.
- [47] A.E. Aplin, A. Howe, S.K. Alahari, R.L. Juliano, Signal transduction and signal modulation by cell adhesion receptors: the role of integrins, cadherins, immunoglobulin-cell adhesion molecules, and selectins, *Pharmacol. Rev.* 50 (1998) 197–263.
- [48] J. Wei, L.M. Shaw, A.M. Mercurio, Regulation of mitogen-activated protein kinase activation by the cytoplasmic domain of the  $\alpha 6$  integrin subunit, *J. Biol. Chem.* 273 (1998) 5903–5907.
- [49] F. Mainiero, A. Pepe, K.K. Wary, L. Spinardi, M. Mohammadi, J. Schlessinger, F.G. Giancotti, Signal transduction by the  $\alpha 6\beta 4$  integrin: distinct  $\beta 4$  subunit sites mediate recruitment of Shc/Grb2 and association with the cytoskeleton of hemidesmosomes, *EMBO J.* 14 (1995) 4470–4481.
- [50] F. Mainiero, C. Murgia, K.K. Wary, A.M. Curatola, A. Pepe, M. Blumenberg, J.K. Westwick, C.J. Der, F.G. Giancotti, The coupling of  $\alpha 6\beta 4$  integrin to Ras-MAP kinase pathways mediated by Shc controls keratinocyte proliferation, *EMBO J.* 16 (1997) 2365–2375.
- [51] K.K. Wary, F. Manieiro, S.J. Isakoff, E.E. Marcantonio, F.G. Giancotti, The adaptor protein Shc couples a class of integrins to the control of cell cycle progression, *Cell* 87 (1996) 733–743.
- [52] M. Gonzales, K. Haan, S.E. Baker, M. Fichmun, I. Todorov, S. Weitzman, J.C.R. Jones, A cell signal pathway involving laminin-5,  $\alpha 3\beta 1$  integrin, and mitogen-activated protein kinase can regulate epithelial cell proliferation, *Mol. Biol. Cell* 10 (1999) 259–270.
- [53] T.H. Lin, Q. Chen, A. Howe, R.L. Juliano, Cell anchorage permits efficient signal transduction between Ras and its downstream kinases, *J. Biol. Chem.* 272 (1997) 8849–8852.
- [54] M.W. Renshaw, X.-D. Ren, M.A. Schwartz, Growth factor activation of MAP kinase requires cell adhesion, *EMBO J.* 16 (1997) 5592–5599.
- [55] W.G. King, M.D. Mattaliano, T.O. Chan, P.N. Tsichlis, J.S. Brugge, Phosphatidylinositol 3-kinase is required for integrin-stimulated AKT and Raf-1/mitogen-activated protein kinase pathway activation, *Mol. Cell Biol.* 17 (1997) 4406–4418.
- [56] J. Gu, A. Fujibayashi, K.M. Yamada, K. Sekiguchi, Laminin-10/11 and fibronectin differentially prevent apoptosis induced by serum removal via phosphatidylinositol 3-kinase/Akt- and MEK1/ERK-dependent pathways, *J. Biol. Chem.* 277 (2002) 19922–19928.
- [57] M. Durbeej, K.P. Campbell, Biochemical characterization of the epithelial dystroglycan complex, *J. Biol. Chem.* 274 (1999) 26609–26616.
- [58] R.D. Evans, V.C. Perkins, A. Henry, P.E. Stephens, M.K. Robinson, F.M. Watt, A tumor-associated  $\beta 1$  integrin mutation that abrogates epithelial differentiation control, *J. Cell Biol.* 160 (2003) 589–596.
- [59] Y. Gu, L. Sorokin, M. Durbeej, T. Hjalt, J.-I. Jönsson, M. Ekblom, Characterization of bone marrow laminins and identification of  $\alpha 5$

- containing laminins as adhesive proteins for multipotent hematopoietic FDCP-mix cells, *Blood* 93 (1999) 2533–2542.
- [61] Y. Gu, I. Kortessmaa, K. Tryggvason, J. Persson, P. Ekblom, S.E. Jacobsen, M. Ekblom, Laminin isoform-specific promotion of adhesion and migration of human bone marrow progenitor cells, *Blood* 101 (2003) 877–885.
- [62] J. Li, T. Tzu, Y. Chen, Y.P. Zhang, N.T. Ngyuen, J. Gao, M. Bradley, D.R. Keene, A.E. Oro, J.H. Miner, M.P. Marinkovich, Laminin-10 is crucial for hair morphogenesis, *EMBO J.* 22 (2003) 2400–2410.
- [63] A. Li, N. Pouliot, R. Redvers, P. Kaur, Extensive tissue-regenerative capacity of neonatal human keratinocyte stem cells and their progeny, *J. Clin. Invest.* 113 (2004) 390–400.